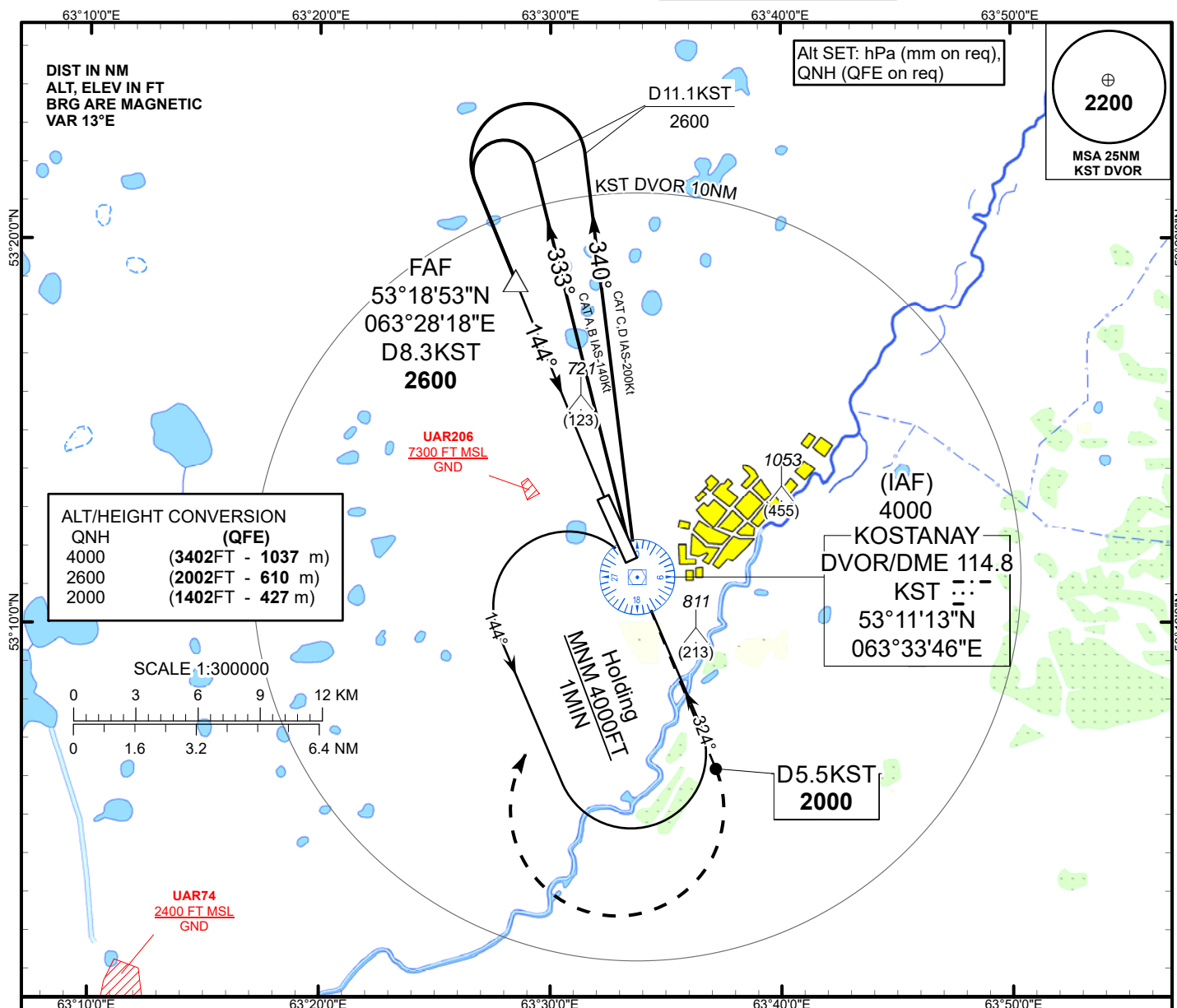


INSTRUMENT APPROACH
CHART
ICAO

AERODROME ELEV **601ft**
HEIGHTS RELATED TO
THR RWY 14 - ELEV **598ft**

KOSTANAY TOWER 129.30
KOSTANAY ATIS (EN) 118.5
KOSTANAY ATIS (RU) 126.8

KOSTANAY
VOR/DME Z
RWY 14



MISSED APPROACH

Climb on track 144°
to 2000 or above,
outbound to D5.5NM KST,
turn RIGHT to KST.
Climb initially to 2600,
then as directed.
RADIO FAILURE:
In the case of RCF
climb to 4000FT to KST
and join to holding pattern.
Missed approach turn speed
limited to 240Kt IAS maximum.

TRANSITION ALT
10000

D 11.1 KST
2600

FAF
D 8.3 KST
2600

PDG 5.2% (3.0°)
144°

MAPt
D2.6 KST

IAF
4000

DVOR/DME
KST

THR RWY 14
ELEV 598

9 8 7 6 5 4 3 2 1 0 1 2

Aircraft Category		A	B	C	D	DIST to THR	NM	6.2	6	5	4	3	2	1
Straight-in Approach OCA/H						DME KST	NM	8.3	8.1	7.1	6.1	5.1	4.1	3.1
	VOR/DME	980(380)	980(380)	980(380)	980(380)	ALTITUDE	FT	2600	2554	2236	1918	1599	1257	938
						HEIGHT	FT	2002	1956	1638	1320	1001	683	364
Aerodrome Operating Minima MDH ft x RVR(CMV)	VOR/DME					GS	Kt	80	100	120	140	160	180	
						FAF-MAPt (5.7NM)	min:sec	4:17	3:25	2:51	2:26	2:08	1:54	
						Desc.Rate(5.2%)	ft/min	420	530	630	740	850	960	

KOSTANAY
VOR/DME Z

AERONAUTICAL DATA TABULATION

VOR approach to RWY14 from DVOR/DME KST	
Fix/point	Coordinates
(IAF) DVOR/DME KST	53° 11' 13.0"N 063° 33' 45.5"E
(FAF) D8.3 KST	53° 18' 52.6"N 063° 28' 18.1"E
THR RWY 14	53° 13' 12.74"N 063° 32' 23.66"E
Final approach descent angle is 3°	